



Environment & Culture

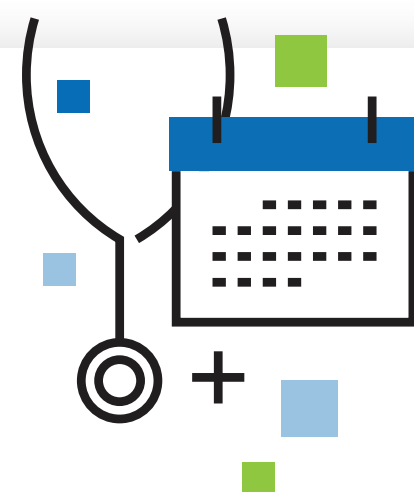
Mission-Driven Organization
Headquartered in the heart of downtown Milwaukee



Located on the Riverwalk with indoor access to 3rd St. Market Hall, & newly redesigned office space focused on collaboration

Benefits

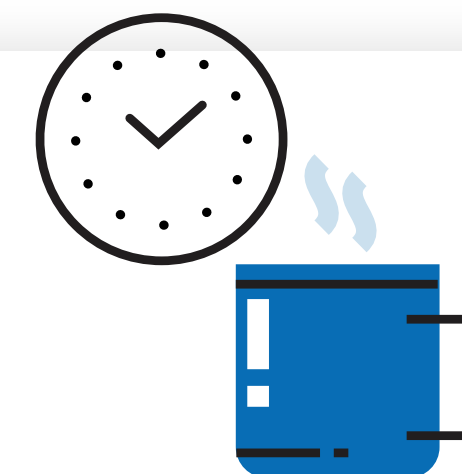
Generous PTO, healthcare, retirement & more!



- ★ **Competitive retirement program with company match and profit sharing (up to 8%)**
- ★ Medical, dental & vision plans
- ★ Robust wellness program with incentives
- ★ 8 hours of paid volunteer time to support the cause of your choice
- ★ Employee Assistance Program
- ★ **One week paid winter break each December**
- ★ Plus 7 paid holidays & PTO package

Perks

Work-life balance, conveniences & activities

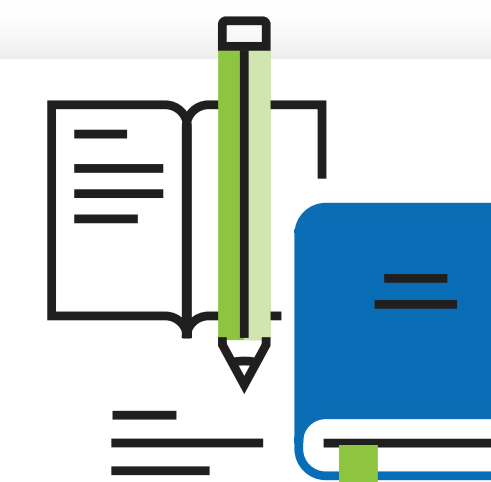


- ★ Coffee socials, peer to peer recognition and more!
- ★ Concierge services including dry cleaning & auto services
- ★ Access to on-site fitness center, pickleball court and indoor dog park
- ★ Sit/stand desks for everyone
- ★ **Summer hours**



Development

Full membership to ASQ, learning & other resources



- ★ **Access to over 12 certifications, free of charge for employees**
- ★ **Tuition reimbursement program**
- ★ Unlimited access to LinkedIn Learning
- ★ Membership for all employees to ASAE

